

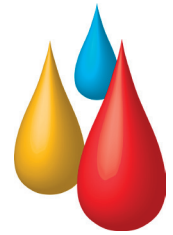
# efi® Fiery® Color Profiler Suite

Profiling and Imaging Software

Amazing,  
precise,  
consistent  
color



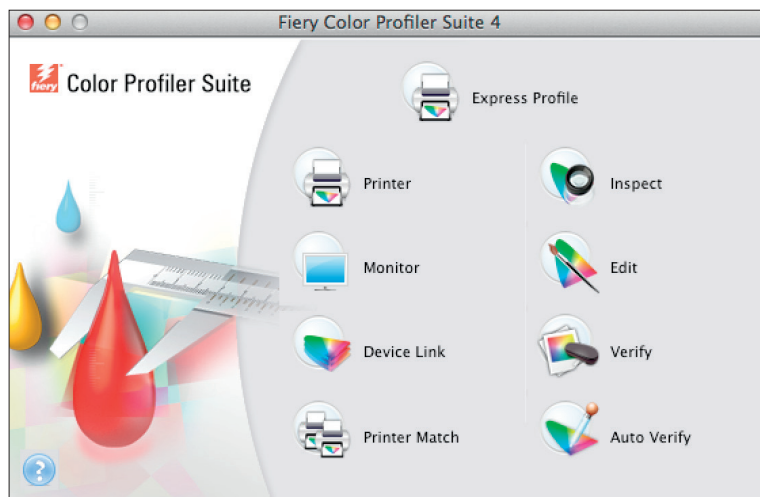
# All the tools you need to get your color right



Color quality is a key issue for digital print businesses. The major color challenges print providers report include rejected jobs, lost profits due to reprints, and having to maintain color consistency across multiple printers.<sup>1</sup>

Fiery® Color Profiler Suite is an integrated color management solution that allows you to successfully match color to a specific color reference, and to maintain this match throughout the print run. In addition, Color Profiler Suite includes expert-level tools to generate best in-class device link profiles, and match multiple printers to achieve shop-wide consistency.

<sup>1</sup> InfoTrends 2015.



Integrated color management tools available in one solution.

# How Color Profiler Suite helps you get the right color every time

Color Profiler Suite represents the most complete integrated color management toolset on the market. Modules are included for profile creation, inspection, editing, and color quality assurance. All the tools work directly with ICC profiles on the Fierey server. Use Color Profiler Suite to:

- Produce accurate color output every time from the first to the last copy.
- Reprint jobs knowing the color will be the same as the previous run.
- Accurately match color to industry appearance standards such as ISO.
- Match output from multiple Fierey Driven™ engines to provide operational flexibility to split long-run or time-critical jobs.
- Calibrate Fierey Driven print systems to G7.
- Make color management easy for any press or prepress operator. Integration with Fierey servers means operators with no color training can succeed in creating a Fierey calibration and output profile.
- Create profiles with automatic gray component replacement (GCR) to optimize neutral reproduction and expand gamut.
- Seamlessly access Color Profiler Suite tools directly from Fierey Command WorkStation®.

Operators of any skill level can verify color accuracy for compliance with industry standards.



## Color Profiler Suite modules

Fiery Color Profiler Suite offers a comprehensive color management toolset that guarantees your color reproduction is always accurate, precise, and consistent.

### **Express Profiler**

- Streamlines the profiling workflow by reducing the time required to produce a Fiery calibration and high-quality output profile.
- Allows users to make a new calibration set and output profile in five simple steps so they can quickly get back to producing profitable print jobs.
- Automatically links the calibration, profile, and image quality settings into a preset or virtual printer in order to make the settings instantly available to all users.



### **Printer**

- Creates top-quality profiles to produce prints that meet or exceed tolerances for industry certifications in fewer steps than any other profiling package on the market.
- Calibrate a Fiery Driven print system to G7 in order to gray balance the print system before profiling.
- Uses expert profiling settings from press manufacturer-approved profiles for Fiery Driven digital print systems.
- Uses integration with the Fiery server to make profiling so easy that anyone can successfully create high-quality output profiles.
- Features multi-channel profiling support for future Fiery Driven High-Speed Inkjet Presses.



### **Verify**

- Enables operators of any skill level to verify color accuracy for compliance with industry standards such as ISO 12647-7:2016, ISO 12647-8, and verify G7 conformance.
- Increases likelihood that the first sample will be approved by the print buyer.
- Provides "by-the-numbers" tracking to ensure accurate output over time so that reprints match the first run of the job.



### **Printer Match**

- Matches up to five Fiery Driven printers to achieve color consistency across the print facility.
- Allows a single job to be split across multiple color-matched presses for maximum productivity.
- Allows operators of any skill level to easily match printers by guiding them through the process of creating custom calibration sets, a shared gamut, and a common output profile for Fiery Driven print engines.



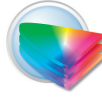
## Edit

- Allows precise tuning of color appearance using the world-class ICC output profile editor.
- Adjust tone, cast, saturation, or gray balance to satisfy even the most demanding print buyer.
- Includes selective color correction to allow editing of specific color regions or profile nodes.



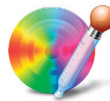
## Device Link

- Delivers maximum quality for professional print environments that require precise colorimetric matching.
- Creates device link profiles that improve precision of color matching through iterative optimization.
- Loads G7 corrections directly from Curve3 software, and includes specific patch targets to optimize G7 compliance.
- Matches spot colors through measurement and iterative optimization.



## Calibrator

- Creates new Fiery calibration sets or recalibrates a Fiery server with any supported spectrophotometer.
- Supports the latest 51 patch calibration target even on legacy Fiery servers for most accurate calibration.
- Features calibration support for future Fiery Driven High-Speed Inkjet Presses.



## Inspect

- Projects the color gamut defined by an ICC profile in 2D or 3D view.
- Helps operator to visualize device color capabilities and gamut to predict the precision of the output and set expectations for a color workflow.
- Allows operator to identify errors in measurement data to prevent failed profiling attempts.
- Compares multiple ICC profiles to evaluate color consistency across multiple print systems.



## Monitor

- Enables color management of monitors for soft proofing to minimize waste from reprints and rework.
- Allows users to share digital color files with confidence by providing consistent appearance across multiple displays.
- Creates custom ICC display profiles for use with all modern operating systems.



## Auto Verify

- Sends control bars to the Fiery server on a user-defined schedule to monitor color quality.
- Enables data collection to track color quality trends more accurately over time.
- Supports all popular control bars for internationally accepted color references.









# Fiery Color Profiler Suite

## Product configuration

SOFTWARE	DESCRIPTION
Fiery Color Profiler Suite	Includes EFI ES-2000 spectrophotometer and Color Profiler Suite software. Includes one year Software Maintenance and Support Agreement (SMSA). SMSA includes direct EFI technical support and all product upgrades with a current SMSA at no charge.
Fiery Color Profiler Suite – software only	Includes the full version of Color Profiler Suite software. A spectrophotometer is required for licensing. Includes one year Software Maintenance and Support Agreement (SMSA).
Fiery Color Profiler Suite – upgrade v3.x to v4.x	Provides software upgrade from Color Profiler Suite version 3.x to the latest release. Includes one year Software Maintenance and Support Agreement (SMSA).
Fiery Color Profiler Suite – version upgrade 4.x to latest release	Requires current SMSA agreement. All Color Profiler Suite upgrades after version 4.0 are included at no charge under SMSA coverage.

HARDWARE		DESCRIPTION
EFI ES-2000		Handheld spectrophotometer is used to create profiles and verify color compliance via measurement. Supports M0, M1, or M2 (UV or non-UV) allowing users to profile any paper with one instrument.
EFI ES-6000		The optional ES-6000 autoscan spectrophotometer allows users to automatically measure a full page of patches in just a few minutes. The device can be shared on the network by multiple Fiery Color Profiler Suite users to calibrate and profile multiple Fiery servers simultaneously.
X-Rite i1iO® table		The optional i1iO table automates color measurement by adding a robotic arm to the ES-2000. It helps to decrease time spent creating device profiles and calibrating.
Konica Minolta FD-9		The Konica Minolta FD-9 autoscan spectrophotometer can be used to measure a full page of patches in a few minutes. As with all supported spectrophotometers, the FD-9 can be used to license Color Profiler Suite 4.8 and later.
Other supported devices		X-Rite iSis series, Konica Minolta FD-5BT spectrodensitometer, Barbieri Spectro Swing, Spectro LFP, SpectroPad. All are supported to license Color Profiler Suite 4.7 and later.

### Color Profiler Suite software includes:

#### One year support and maintenance

- Get the latest updates and upgrades online at no additional charge with a current Software Maintenance Support Agreement (SMSA).
- Access direct technical support by phone or email.

#### Next Steps

Join the Fiery community to obtain answers, stay informed, and learn best practices at [fieryforums.efi.com](http://fieryforums.efi.com).

Visit [efi.com/cps](http://efi.com/cps) to learn more and download the software demo.

#### FREE online training courses included

You can quickly become proficient in color management and start taking advantage of the powerful tools in Color Profiler Suite from the two interactive eLearning courses included with the product.

**CK****Digital  
workflows**

by Charles Kieffer Group

**Tél. +352 26 380 1 Fax +352 26 380 380**  
sales@ck-group.lu2, rue Léon Laval - Z.A. Am Bann  
L-3372 Leudelange**ck-digitalworkflows.lu****efi**

Nothing herein should be construed as a warranty in addition to the express warranty statement provided with EFI products and services.

The APPS logo, AutoCal, Auto-Count, Balance, Best, the Best logo, BESTColor, BioVu, BioWare, ColorPASS, Colorproof, ColorWise, Command WorkStation, CopyNet, Cretachrom, Cretaprint, the Cretaprint logo, Cretaprinter, Cretaroller, DockNet, Digital StoreFront, DocBuilder, DocBuilder Pro, DocStream, DSFdesign Studio, Dynamic Wedge, EDOX, EFI, the EFI logo, Electronics For Imaging, Entrac, EPCount, EPPhoto, EPRegister, EPStatus, Estimate, ExpressPay, Fabrivu, Fast-4, Fiery, the Fiery logo, Fiery Driven, the Fiery Driven logo, Fiery JobFlow, Fiery JobMaster, Fiery Link, Fiery Prints, the Fiery Prints logo, Fiery Spark, FreeForm, Hagen, Inkintensity, Inkware, Jetrion, the Jetrion logo, LapNet, Logic, MiniNet, Monarch, MicroPress, OneFlow, Pace, PhotoXposure, Printcafe, PressVu, PrinterSite, PrintFlow, PrintMe, the PrintMe logo, PrintSmith, PrintSmith Site, Printstream, Print to Win, Prograph, PSI, PSI Flexo, Radius, Rastek, the Rastek logo, Remoteproof, RIPChips, RIP-While-Print, Screenproof, SendMe, Sincrolor, Splash, Spot-On, TrackNet, UltraPress, UltraTex, UltraVu, UV Series 50, VisualCal, VUTEK, the VUTEK logo, and WebTools are trademarks of Electronics For Imaging, Inc. and/or its wholly owned subsidiaries in the U.S. and/or certain other countries. All other terms and product names may be trademarks or registered trademarks of their respective owners, and are hereby acknowledged.

FIER.HB.07.16\_US